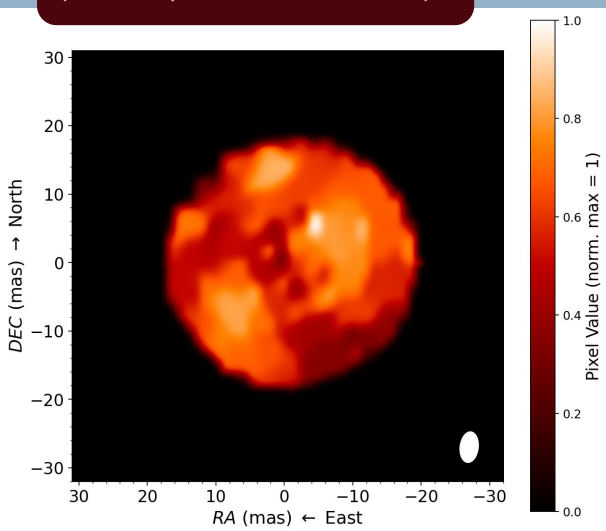


L.Hamel¹, M.Montargès¹, A.De Koter², J.Z. Ma³, A. Chiavassa⁴, F. Baron⁵

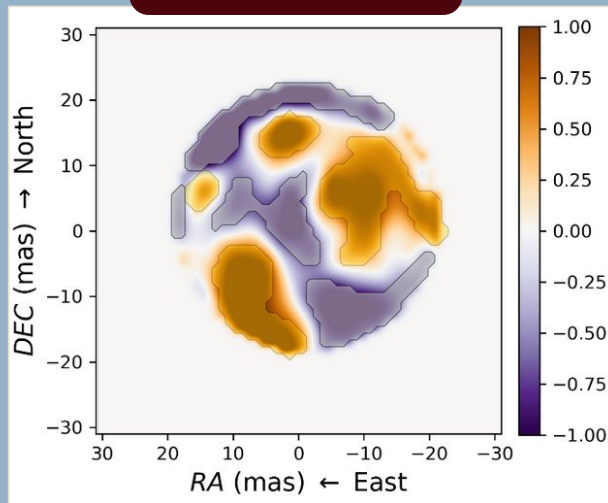
¹LIRA, Observatoire de Paris, Meudon, ²Astronomical institute "Anton Pannekoek", Amsterdam, ³Max Planck Institute for Astrophysics, Garching, ⁴Université Côte d'Azur, Observatoire de la côte d'Azur, CNRS, Lagrange, Nice, ⁵Center for High Angular Resolution Astronomy, Georgia state university, Atlanta

Antares is a red supergiant star
($T_{\text{eff}} = 3600\text{K}$, $d = 170\text{pc}$, $R \sim 700R_{\odot}$)

1. Image reconstruction (GRAVITY/VLTI data + OITOLS)



2. Structure detection



3. Comparison with simulations (AREPO + Optim3D)

