

Betelgeuse (α Ori) may not be single after all ! *(under embargo)*

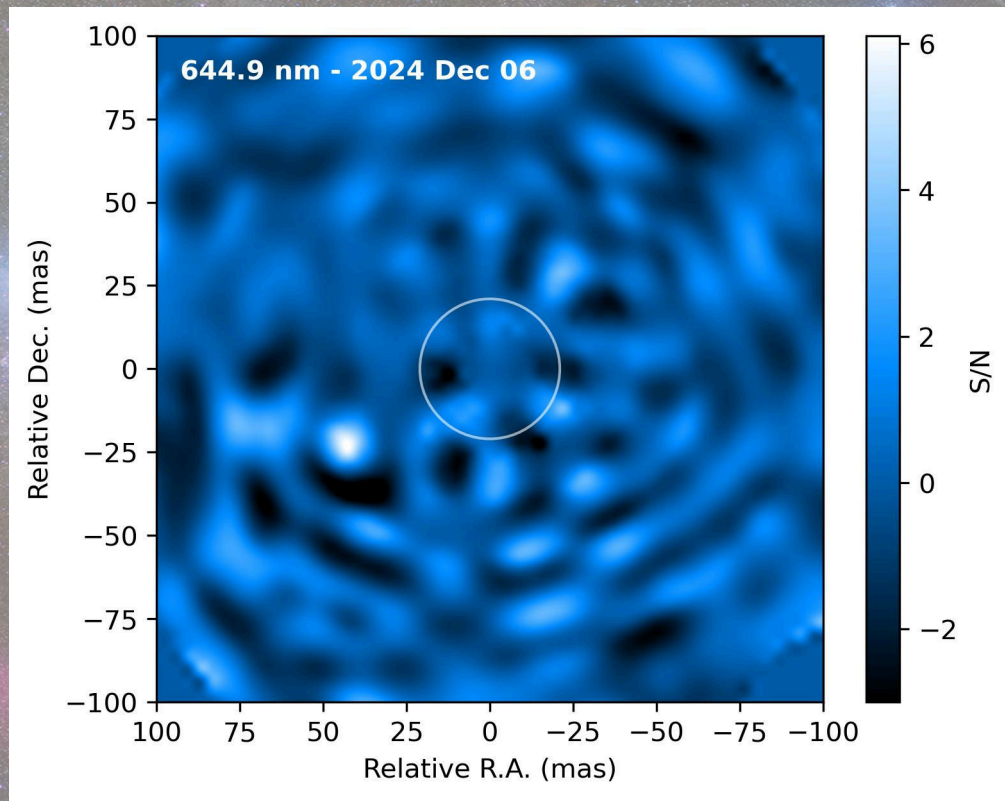
M. Montargès, A. Boccaletti, O. Flasseur, J. Milli, P. Kervella, A. de Koter, E. Bordier, A. Dupree & S. Ridgway

1. Massive stars cannot form alone. Apparently single, **Betelgeuse** was challenging population synthesis models and massive star population observations

2. Betelgeuse B is a $2.6 - 3.1 M_{\odot}$, B-type, young main sequence star.

3. New avenue to detect and characterize nearby interacting companions of bright and large evolved stars

4. No, I am not jealous of this companion. No.



VLT/SPHERE visible adaptive optics imaging. **The companion is detected at 6σ .** The white circle shows the primary photosphere.